



**REGIONAL DEVELOPMENT AUSTRALIA  
IPSWICH & WEST MORETON**

**2022-2023 Annual Business Plan  
2021-2025 Strategic Plan**





An Australian Government Initiative



Regional Development Australia Ipswich & West Moreton would like to acknowledge the traditional owners of our region.





## Chair's Message

On behalf of the Regional Development Australia Ipswich & West Moreton (RDAIWM) Committee, I am pleased to present our updated Annual Business Plan for 2022- 2023. This newly constructed business plan relates to scheduled projects and activities being planned for delivery this financial year. Also highlighted are the key developments occurring in the Local Government Areas of Ipswich, Lockyer Valley, Scenic Rim and Somerset regions.

RDAIWM has linked each Annual Business Plan to our Strategic Plan 2021-2025 in-line with the Funding Agreement January 2021 – June 2025 between RDAIWM and The Commonwealth Department of Infrastructure, Transport, Regional Development and Communications. Each Annual Business Plan is an extension of our five year plan of economic development for our region.

The Ipswich & West Moreton region has seen significant challenges and accomplishments in the 2021 – 2022 financial year, affected by major floods and the ongoing and onset effects of the worldwide COVID-19 pandemic. All of these issues compiled have placed an immediate and lasting economic impact on our joined communities.

Acknowledging that our region produces a combined Gross Regional Product figure of over \$16.93 billion, the prospect to aid regional growth via population and investment through infrastructure continues to gather significant momentum with the region. Already boasting a confident figure of 120,679 local jobs and over 20,403 local businesses reported during 2021 – 2022.

Currently, the primary infrastructure projects of the Ipswich & West Moreton region include the Ipswich CBD development, ARTC Inland Rail, the development of Springfield and Ripley Valley master-planned communities, Scenic Rim's Vibrant and Active Towns and Villages, the expansion of defence manufacturing and the future planning of the protein precinct in Somerset.

Regional Development Australia Ipswich & West Moreton is part of a national network of organisations working with all levels of government, business, and the community to support Australia's regions' economic development and growth.

Our focus is on growing a vital and dynamic Ipswich & West Moreton economy that harnesses competitive advantage, seizes on economic opportunities and attracts international investment and trade. We help connect Ipswich, Lockyer Valley, Scenic Rim and Somerset communities to Australia and international markets. I want to take this opportunity to thank my fellow committee members and staff for their assistance and contribution to our region during 2021 - 2022.

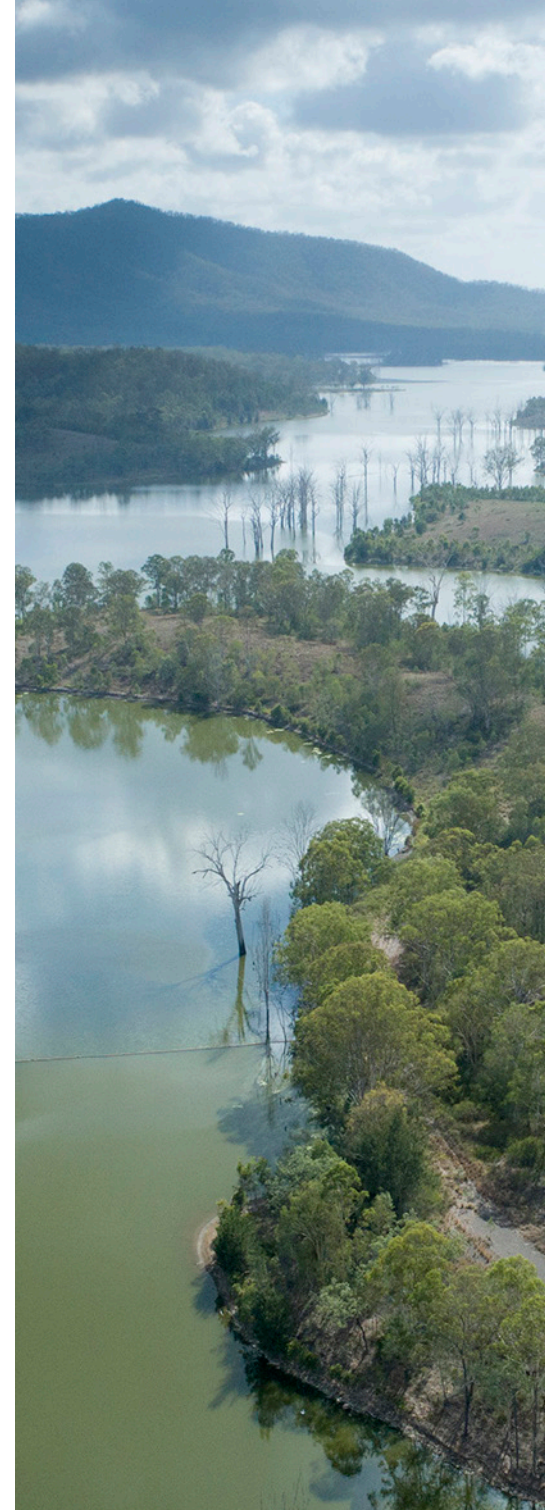
Regards,

*Cr Janice Holstein*

Chair - Regional Development Australia Ipswich & West Moreton Inc.

# Contents

Acknowledgement of Traditional Owners	2
Chair's Message	3
Committee Overview	5
Operational Parameters	6
Executive Summary	7
Strategic Plan 2021-2025	8
The Six Pillars	10
RDAIWM Annual Workplan (2022 - 2023)	12
Outcomes and Performance Indicators (2021 - 2022)	16
Communications and Marketing Strategy	29
Goals and Expectations	31
Ipswich Region	32
Lockyer Valley Region	33
Scenic Rim Region	34
Somerset Region	35
Back Cover	36







## Committee Overview

The Regional Development Australia Ipswich & West Moreton website provides up-to-date information of current committee members and staff. To view our list of current committee members or to view the committee member application process, we suggest visiting the website at: [www.rdaiwm.org.au/committee](http://www.rdaiwm.org.au/committee).

### Chair and Deputy Chair

Committee Chairs and Deputy Chairs are members of the community committed to the development of their region and present the following benefits to Regional Development Australia boards:

- are knowledgeable about the region, including economic, social, cultural and environmental opportunities and challenges
- are strong advocates for their region
- have established networks
- bring together as well as present community views and interest and are skilled in financial management, governance and leadership

There are two critical roles for the Chair of an RDA committee – to provide strategic direction and leadership to the committee and to develop and ensure continued adherence to sound governance arrangements.

The role of the Deputy Chair is to assume the role and duties of the RDA Chair, as defined above, whenever the Chair is not available. The Deputy Chair also plays a significant role in supporting the Chair in day-to-day matters, including the chairing of sub-committees and will have a similar skillset to the Chair.

### Committee Members

- Chair, Cr Janice Holstein
- Deputy Chair, Mr Albert de Ruiter
- Treasurer, Cr Sean Choat
- Secretary, Mr Roger Gorrel
- Member, Mr Allen Bruce
- Member, Cr Duncan McInnes
- Member, Ms Bronwyn Davies
- Member, Mr James Sturges
- Member, Cr Nicole Jonic

# Operational Parameters

## Regional Development Australia

Regional Development Australia (RDA) is a national network of committees made up of local leaders. They work with all levels of government, business and community groups to support and broker economic development opportunities for their regions.

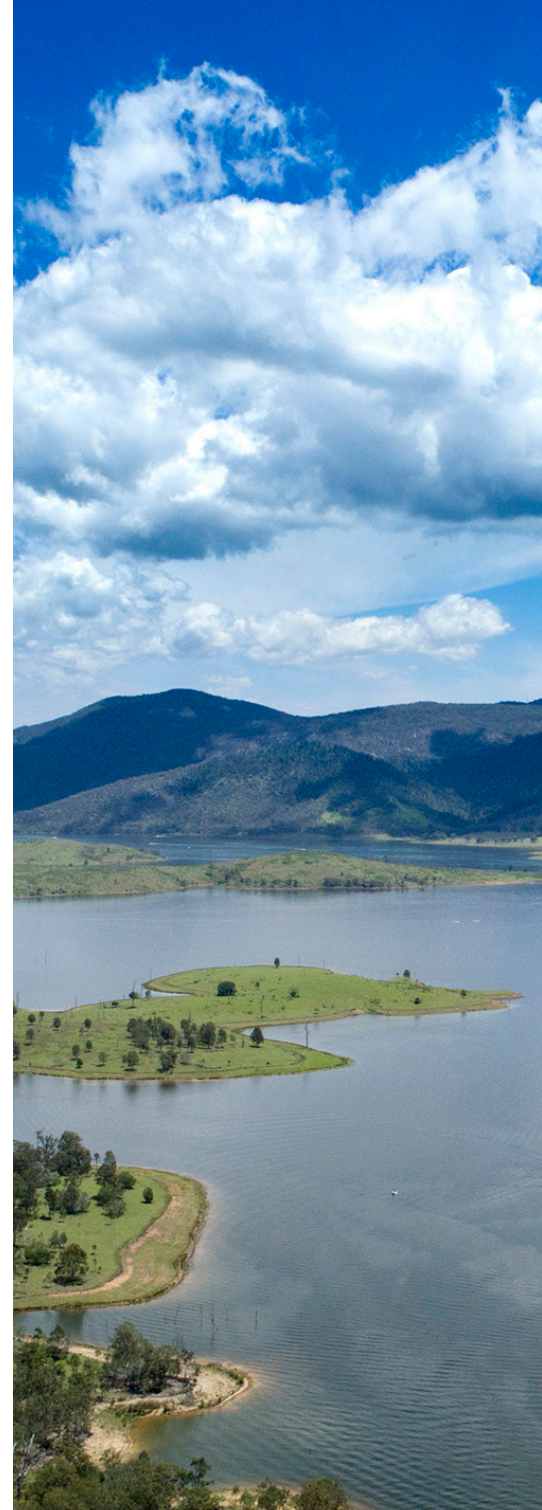
RDA Committees have an active and facilitative role in their regions, and a clear focus on growing strong and confident regional economies that harness their competitive advantages, seize on economic opportunity and attract investment.

RDA Committees are incorporated, not-for-profit community-based organisations (with the exception of the Victorian-based RDA Committees, which are not incorporated). RDA Committee members are volunteers drawn from the region and who bring leadership, skills and experience from the community, business, local government and not-for-profit organisations. Each RDA Committee has a broad and diverse skills base, with demonstrated networks and alliances.

## RDA Charter

**Collaborating with other RDA Committees, all levels of government, and the private sector, RDA Committees will:**

- Facilitate regional economic development outcomes, investment, local procurement and jobs.
- Promote greater regional awareness of and engagement with Australian Government policies, grant programs and research.
- Improve Commonwealth regional policy making by providing intelligence and evidence-based advice to the Australian Government on regional development issues.
- Co-ordinate the development of a strategic regional plan, or work with suitable existing regional plans that will align with the Commonwealth's regional priorities.







## Executive Summary

South East Queensland comprises a group of eleven local government areas bounded to the east by the Pacific Ocean, to the south by the NSW border and to the west and north-west by the Darling Downs. Seven of SEQ's eleven local government areas occupy the coastal plain while the remaining four lies inland.

These four – Ipswich, Lockyer Valley, Scenic Rim and Somerset – comprise the Ipswich & West Moreton region, which accounts for well over half the land area of SEQ (13,000 km<sup>2</sup> out of 22,300 km<sup>2</sup>) but a little less than 10% of its population (333,380 out of 3,554,000\*).

Ipswich & West Moreton is a region of many ranges and several valleys. To the west, the ranges support the Darling Downs while to the east they form a formidable but discontinuous Coast Range. The valleys are flat and fertile. The Lockyer Valley has a nationwide reputation as a source of fresh vegetables, and the Brisbane, Fassifern and upper Logan valleys also support intensive agriculture.

From Ipswich, roads radiate to western Queensland via the Warrego Highway, to central and north Queensland via the Brisbane Valley and Burnett Highway and into NSW and on to Victoria either via the Cunningham and New England Highway or via the western NSW plains.

Not only have the people of Ipswich & West Moreton benefited from the growth of employment within their own region, they have also benefited from employment growth in adjacent regions and from recent transport investments which have improved the connections between Ipswich & West Moreton and the rest of SEQ.

Residential growth in the Ipswich & West Moreton region is at an all-time high, with thousands of people migrating to the area from various cultural backgrounds boosting the region's thriving multiculturalism. Ipswich & West Moreton is a region of diversity and heritage, consisting of 350,128 residents from diverse backgrounds of skills and expertise.

Dwelling prices in IMW remain reasonable in relation to Australia at large, though they are high in relation to the norms established in previous generations and in relation to the incomes of young families. This has raised questions of housing affordability in relation to income.

*\* SEQ Population sourced from Profile ID Community – The Population Experts*



# Strategic Plan 2021 - 2025

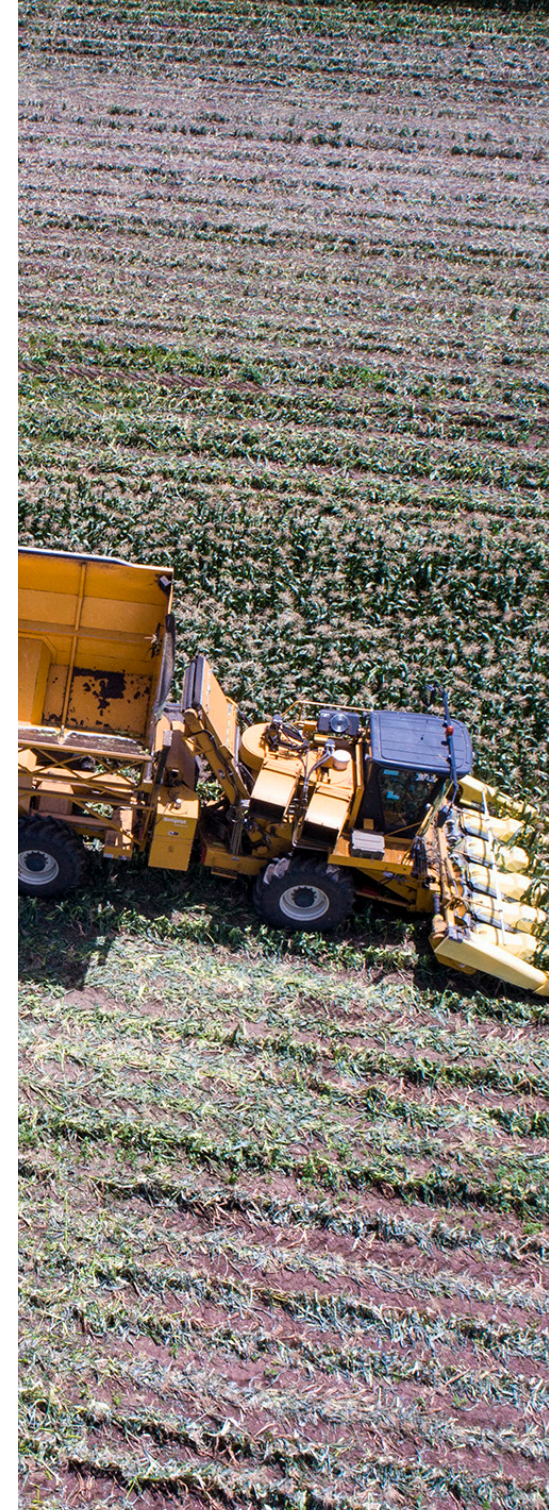
## Regional Development Australia

The Regional Development Australia Ipswich & West Moreton's (RDAIWM) 'Strategic Plan 2021-2025' is a critical document designed to reflect the aspirations and the context of the communities it serves. Upon completion after extensive consultation, this published document - a partnership between the three (3) levels of Government - will articulate a diverse range of sustainable development objectives and inform the community about RDAIWM mandates and resulting priorities.

**According to The Australian Government's six regional priorities, the Ipswich & West regional projects, programs, and policies will be summarised under one of the following:**

1. Connectivity and infrastructure incorporating digital connectivity, transport links, and freight and supply chain infrastructure.
2. Human capital and skills to provide skilled and adaptable workforces, regional universities and training and schooling.
3. Regional employment and business to develop regional businesses and industry, local R&D and innovation and a strategic regional vision.
4. Leadership and collaboration by investing in regional leadership, capable local Government and the Indigenous community.
5. Amenity and liveability providing services, facilities and liveability, and support for local priorities.
6. Sustainable natural resources to build future resilience, ensure sustainable foundations and provide economic opportunities and jobs.

The RDAIWM Strategic Plan 2021-2025 will provide a snapshot of the region and will offer a description of the economic and social diversity of the Ipswich & West Moreton regions individually. This document will capture unprecedented population growth, highlight the role agriculture plays in contributing to the national economy and consider regional development challenges such as population fluctuations, labour and skills, infrastructure needs and investment strategies in a highly dynamic environment.







## Strategic Plan 2021 - 2025

The Strategic Plan 2021-2025 will effectively assist in mobilising coordinated development efforts that contribute to an integrated strategic approach.

This document will provide a regional (Ipswich & West Moreton) master-plan framework to facilitate those development efforts across the broader South East Queensland region.

The Strategic Plan, 2021-2025, will support the view that communities are as unique as the individuals that make them up, advocating that development strategy and priorities for a community must start from, and be guided by, an analysis of the individual situation of each community.

This Strategic Plan 2021-2025 will provide RDAIWM with a basis from which to encourage and support those unique regional communities to work together creatively and cooperatively.

Furthermore, the Strategic Plan 2021-2025 will reinforce the critical role of local leadership, self reliance and the strengthening of institutions – in essence, local capacity building.

Accordingly, the first step in achieving progress towards sustainable regional development is to commence a process of encouraging and supporting innovative alignments, collaboration and connectivity.



## The Six Pillars Connecting an Industrial and Agricultural Regional Community

The RDAIWM Strategic Plan 2021-2025 aims to reinforce the equally critical role of the three tiers of Government delivering leadership, empowerment, and strengthening institutions in the essence of sustainable regional development and liveability.

Liveability is the 'key' to sustainability and why people, families and friends decide on an area to reside. Liveability conceptualises employment and raising a family in a region with vital essential facilities such as day-care, schools, sporting venues, libraries, aged care facilities, parks, hospitals, roads and transport. Liveability enables life balance and completes the desire to work and enjoy life in a particular community.

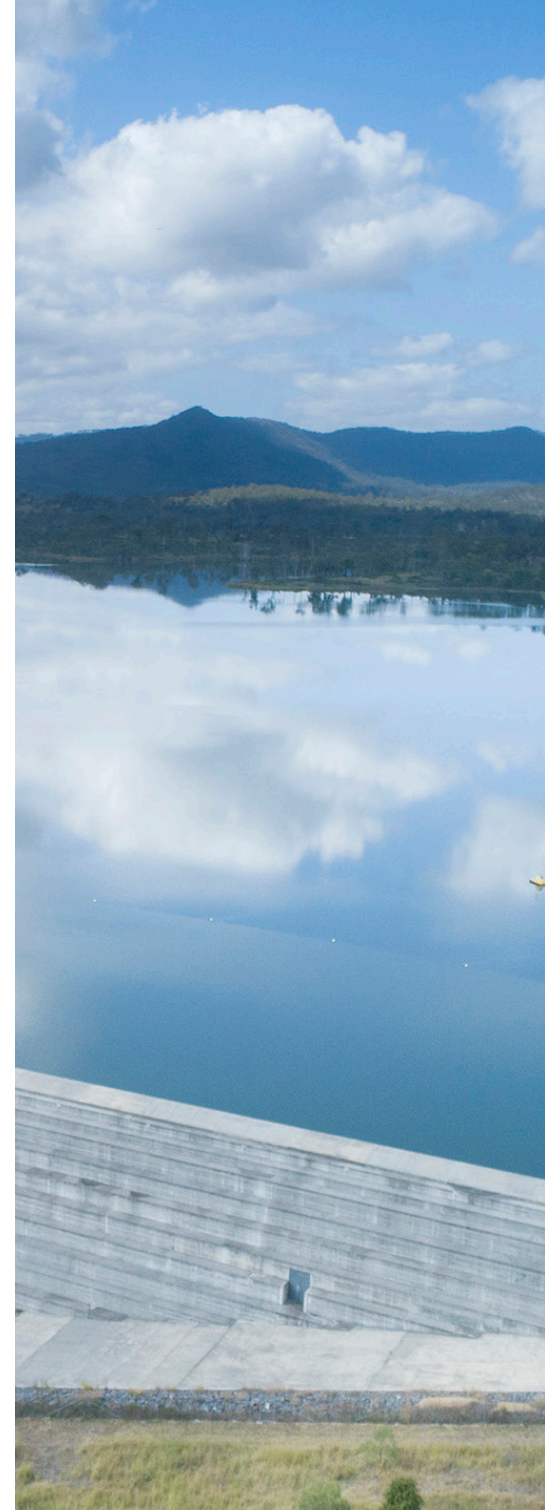
For a community to develop and maintain its specific style of liveability, specific needs and wants must be met hence the need for ongoing strategic planning and the continued development of specific community projects and programs.

The RDAIWM Committee has commenced aligning the Australian, Queensland and Local Government policies and initiatives with community expectations and foreshadowing the Policy Unison Imperative required to ensure the realisation of such community expectations. Observation within the community also suggests a level of uncertainty arising from previous Government policies where strategic alignment was not deemed an imperative, thus highlighting the need for an educational component to enable the proposed cultural swing toward prudent cooperation rather than that of aggressive acquisition of the past.

Upon commencement of the Strategic Plan 2021-2025 mapping process, the RDAIWM Committee is aware that for prudent cooperation in strategic planning to occur, the Local Government would need to be recognised as the lead agency for community projects or programs.

The RDAIWM Committee, to maintain transparent participation and honest feedback to the Australian Government, require operational processes that provide a level of assurance to the Committee and, in turn, the Australian Government regarding project or policy advocacy.

In this regard, the proposed interface framework of Local Government would enhance that level of assurance by validating the critical elements of sustainable regional development (governmental unison, sustainability, strategic planning, transparency and the alignment of relevant key stakeholders).







## The Six Pillars Connecting an Industrial and Agricultural Regional Community

The RDAIWM Committee's aim in supporting both community expectation and the Local Government's long-term strategic plans will be outlined in the RDAIWM's 'Six Pillars Connecting an Industrial and Agricultural Regional Community' framework. The proposed framework will create supporting structures between a community foundation and the overarching umbrella of 'community liveability' in sustainable regional development in the Ipswich & West Moreton region.

In alignment with the Local Government's Corporate Planning process, this document has been structured around the 'Six Pillars': Connectivity and infrastructure, Human capital and skills, Regional employment and business, Leadership and collaboration, Amenity and liveability and liveability Sustainable natural resources.

To achieve appropriate levels of liveability, individual communities will require the realisation of all six pillars elements over the long term. Therefore, projects, programs, or policies within the RDAIWM Strategic Plan 2021-2025 document will align with one of the Pillars.

This process will reflect that for community aspiration and suggestion to be realised, alignment with their Local Government Corporate Planning process is imperative.

RDAIWM's endorsement and advocacy requirements will include submissions linking to a minimum of one of the Pillars. Such endorsement and advocacy by the RDAIWM Committee would encourage further progression by way of support in facilitating processes that would potentially grow and further enhance the pillar alignment.

Projects included within the Strategic Plan 2021-2025 document will be linked to a minimum of one pillar, thus initiating the endorsement and advocacy of the RDAIWM Committee. Continued support and advocacy by the RDAIWM Committee will be subject to and conditional upon projects aligning with the proposed Policy Unison Imperative.

The projects, policies, or programs recorded by the RDAIWM Committee via the Six Pillar templates will result from a rigorous research process. All submissions will be linked to one of the Australian Government's six regional priorities.

Also, all Pillars relate community and Local Government objectives to the RDAIWM vision and strategic intentions per the RDAIWM 2022-2023 Annual Business Plan.

Future programs, projects and policies that will be listed may change throughout future strategic plans due to fluctuations across the economic and social landscape, in-depth risk analysis, funding availability, further consultation and future planning by all three levels of Government.

## RDAIWM Annual Workplan (2022 - 2023)

The Ipswich & West Moreton region has several characteristics that provide strong foundations for population and economic growth. Proximity to a metropolitan area, particular forms of landscape amenity, major transport networks and a diverse economic base are all advantages that can be enhanced by policy decisions and local innovation. The regional population growth is evident.

After collecting, accumulating and dissecting regional information and considering it alongside the feedback received through engagement with local council authorities and key community stakeholders, RDAIWM will future plan according to the Australian Government's six regional priorities:

1. Connectivity and infrastructure incorporating digital connectivity, transport links, and freight and supply chain infrastructure
2. Human capital and skills to provide skilled and adaptable workforces, regional universities and training and schooling
3. Regional employment and business to develop regional businesses and industry, local R&D and innovation and a strategic regional vision
4. Leadership and collaboration by investing in regional leadership, capable local Government and the Indigenous community
5. Amenity and liveability providing services, facilities and liveability, and support for local priorities
6. Sustainable natural resources to build future resilience, ensure sustainable foundations and provide economic opportunities and jobs.

These themes also align with the feedback provided by the Australian, Queensland and local government elected representatives. Visibility of the region has been identified as an essential issue for economic growth. Making Ipswich & West Moreton and its capabilities more visible can support the attraction of visitors, new residents, new business and new investment.

### Springfield Regional Jobs Committee

The Springfield Regional Jobs Committee Queensland State Government funded program is intended to bring together local industry groups, training providers, local and major employers and councils to identify key areas of employment growth and local training, skills and workforce development needs.

The role of the members of the Springfield Regional Jobs Committee is to provide strategic and operational leadership in establishing a place-based approach to skills investment. The committee was established in early 2018 and is Chaired by the CEO of RDAIWM. The program is auspiced by RDAIWM who has employed a full-time Project Officer.

- Engagement with regional employers, small business and industry stakeholders to ensure training and employment solutions are more accurately aligned with local skills needs and economic activity to support regional jobs growth
- Regional industry advice to identify trends and opportunities in the local area
- An opportunity for key local stakeholders to work together to align regional skills and workforce development with local industry and employer needs
- Stronger links between schools, parents, industry and employers, and registered training organisations
- An avenue to address employment issues, identify and maximise local employment opportunities

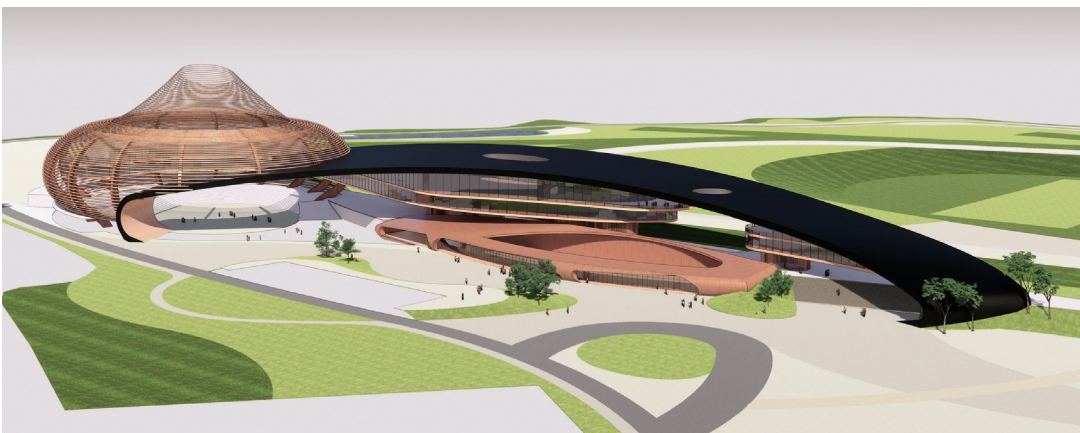


## Springfieldjobs.com.au

Springfield Jobs is an on-line jobs portal that allows you to search by location, employer or job type, 'Talent Communities' expands your search to event, membership, local community or a defined group.

A Talent Community is a shared technical platform to link jobs and talent to member groups, local regions or infrastructure projects. Active member employers can source candidates within the linked talent pool. The result is smart matching of interested talent, strong communities and localisation of jobs, skills, talent, and capital.

Springfield Jobs is a user-friendly free portal for employers and job seekers to advertise and search local employment opportunities. Springfield Jobs covers the six suburbs of Great Springfield: Augustine Heights, Brookwater, Springfield, Springfield Central, Springfield Lakes and Spring Mountain.



## Lockyer Valley Equine Collaborative

The vision of the Lockyer Valley Equine Collaborative is to develop an equine precinct, which is sustainable over the long term. The project also supports the growth in thoroughbred racing, equine industries and associated businesses whilst generating additional jobs in the region and across South East QLD.

**The purpose of the Lockyer Valley Racing and Equine Collaborative is to provide:**

- options to further develop the site as a racing and equine facility on the land which currently hosts the Lockyer Valley Turf Club
- strategic direction and leadership in the development, implementation and sustainability of the equine precinct project advise, support and assist in the performance of the project

The Lockyer Valley Equine Precinct Business Case and Feasibility Study was completed after extensive community consultation and design meetings. RDAIWM supplied the economic modelling and events modelling for the feasibility study.

The Lockyer Valley Racing and Equine Collaborative, which is also made up of Racing Queensland, Equestrian Queensland, The University of Queensland's School of Veterinary Science and Regional Development Australia (Ipswich and West Moreton), has developed a master plan for a multi-use racing and equine precinct capable of host a variety of national and international events.

The Lockyer Valley Equine Collaborative will seek support for the project and consider a shared contribution from the Federal & State Governments, 50% contribution from both Governments for the pre-construction activities of \$4.6M in line with funding arrangements for the 2032 Olympics.

This will enable the project to progress to the shovel ready stage and will validate all stages and move to construction phase by 2025 and completion by 2026 with full confidence of capability to service the pre Olympic & Paralympic equestrian needs.

## Local Jobs Program (Wivenhoe)

As part of supporting Australia's economic recovery from the COVID-19 pandemic, the Australian Government's Local Jobs Program (LJP) brings together expertise, resources and access to funding at the local level to accelerate reskilling, upskilling and employment pathways in the Wivenhoe Employment Region.

**Recognising the importance of local knowledge in getting people back into jobs quickly, the LJP includes the following key elements in each region:**

- a Local Employment Facilitator
- a Local Jobs and Skills Taskforce
- a Local Jobs Plan
- a Local Recovery Fund to support small scale activities
- access to the National Priority Funding Pool.

**Key employment and training priorities:**

1. Negotiate and co-design pre-employment preparation programs to address the current mismatch between the job requirements of employers/industries with vacancies they are unable to fill.
2. Collaborate with all relevant levels of Government and private sector contractors to identify future major projects and ensure that associated social impact commitments are met through skills development in the current and future workforce.
3. Collaborate with key regional stakeholders, including the three levels of Government, to address barriers to employment resulting from a lack of viable "transport to work" options within and across the Region. This will include strategies around driver's licencing.
4. Promote the engagement and retention of Australian Apprenticeships (including Traineeships) to align with projected skills shortages, including areas of future demand in the Region, and connect with appropriate sources of candidates including the Employment Services Providers and pathways from local High Schools.

## Ipswich, Lockyer Valley and Somerset Jobs

Before the initiation of the project, RDAIWM understood the opportunity that the Ipswich, Lockyer Valley and Somerset regions have in creating and matching local jobs for local people through an on-line jobs portal. IWM Jobs is a regional initiative to capture sustainable employment opportunities for individuals and communities across the whole region.

Ipswich Lockyer Valley and Somerset Jobs is a free jobs portal for both employers and job seekers. During this period this platform also added an educational and training search function to link individuals with local educational institutions to match their field of study.

Since its launch, the Ipswich, Lockyer Valley Jobs website has been a success for regional employers and job seekers alike. The employment website is currently home to 664 registered employers and 19,370 registered job seekers, with much more unregistered web traffic.

## Trade and Investment Queensland (West Moreton Group)

The 'West Moreton Trade and Investment Group' (WMTIG) has been established to provide an opportunity to develop initiatives to support greater trade and investment outcomes and collaboration across the West Moreton region. This will be achieved by: sharing information, identifying priorities, pooling resources, increasing government and stakeholder connectivity and collaboration and shaping trade and investment projects.

Trade & Investment Queensland (TIQ), and the Chief Executive Officer of Regional Development Australia Ipswich & West Moreton (RDAIWM) will co-chair this reference group. TIQ in collaboration with RDAIWM will provide secretariat support.

- Build on our strengths
- Further diversify our economy
- Target key markets
- Build export capabilities
- Foster export opportunities
- Facilitate investment
- Promote investment in infrastructure
- Pursue investment in innovation
- Support regional growth



## Ipswich City Economic Recovery Taskforce

The effects of a disaster on the economic environment can be classified in terms of direct and indirect impacts. The tangible impacts can usually be given a monetary value and may include loss of tourism, employment opportunities and reduction in cash flow for businesses.

The role of the Economic Recovery Taskforce (the Taskforce) is to develop the City's capability to recover from these impacts and coordinate the effective economic recovery from disaster events in Ipswich.

The Taskforce operates across the economic function of recovery in accordance with the scope and principles outlined in the LRG Terms of Reference.

**During 'business as usual', the objectives of the Economic Taskforce are to:**

- establish and maintain relationships across agencies to create a shared understanding of economic recovery governance and operations; and
- build the taskforce's capability to respond effectively to the Ipswich community during disaster recovery.

The Taskforce, when activated, assumes the disaster recovery aims and functions outlined within the 'Economic Recovery' section of the City of Ipswich Recovery Sub Plan.

## RDAIWM Project Status Report (January - December 2022)

The Project Status Reports aim is to provide an ongoing overview of the Ipswich & West Moreton region. This includes current infrastructure projects, detailing our economic diversity, usage of significant roadways, industry development, telecommunications and community information. Data on current construction projects is supplied by Cordell (Core Logic).

The reports impart analytical data and statistics sourced from the Australian Bureau of Statistics, as well as The Queensland Government's Statistician's Office in a multitude of areas that aide in better understanding the Ipswich & West Moreton region.

## RDA Ipswich & West Moreton Strategic Plan 2021 - 2025

The Regional Development Australia Ipswich & West Moreton's (RDAIWM) 'Strategic Plan 2021-2025' is a critical document designed to reflect the aspirations and the context of the communities it serves. Upon completion after extensive consultation, this published document - a partnership between the three (3) levels of Government - will articulate a diverse range of sustainable development objectives and inform the community about RDAIWM mandates and resulting priorities. According to The Australian Government's six regional priorities, the Ipswich & West regional projects, programs, and policies will be summarised under one of the following:

1. Connectivity and infrastructure incorporating digital connectivity, transport links, and freight and supply chain infrastructure
2. Human capital and skills to provide skilled and adaptable workforces, regional universities and training and schooling
3. Regional employment and business to develop regional businesses and industry, local R&D and innovation and a strategic regional vision
4. Leadership and collaboration by investing in regional leadership, capable local Government and the Indigenous community
5. Amenity and liveability providing services, facilities and liveability, and support for local priorities
6. Sustainable natural resources to build future resilience, ensure sustainable foundations and provide economic opportunities and jobs.

## Outcomes and Performance Indicators (2021 - 2022)

### OUTCOME 1

Facilitate regional economic development outcomes, investment, jobs and local procurement.

#### PERFORMANCE INDICATORS

- Provide details and/or a copy of a suitable existing strategic Regional Plan that your RDA is contributing to or that your RDA is developing in accordance with the Charter and the RDA Better Practice Guide.
- Connectivity and infrastructure incorporating digital connectivity, transport links, and freight and supply chain infrastructure.
- Human capital and skills to provide skilled and adaptable workforces, regional universities and training, and schooling.
- Regional employment and business to develop regional businesses and industry, local R&D and innovation and a strategic regional vision.

### PART I - FOR THE ANNUAL BUSINESS PLAN

#### What will we do?

- Springfield Regional Jobs Committee – Lead/Championed
- Springfield Jobs.com.au – Lead/Championed
- Lockyer Valley Equine Collaborative – Lead/Championed
- Local Jobs Program (Wivenhoe) – Contributed
- Ipswich, Lockyer Valley, Somerset Jobs.com.au – Lead/Championed
- Trade and Investment Queensland West Moreton Group – Lead/Championed

#### Activity 1 - Springfield Regional Jobs Committee

The Springfield Regional Jobs Committee program is intended to bring together local industry groups, training providers, local and major employers and councils to identify key areas of employment growth and local training, skills and workforce development needs.

- RDA Ipswich & West Moreton has a high level of involvement by Chairing this Committee
- RDA Ipswich & West Moreton have contracted a Project Officer to deliver the Program
- The Springfield Regional Jobs Committee is currently funded by the Queensland State Government for a further two years (2021-2023).
- This activity aligns with the Australian Government regional priority of: Human Capital and Skills



## Activity 2 - Springfield Jobs

- RDA Ipswich & West Moreton has an anticipated level of involvement of: Leads the Springfield Jobs portal.
- This activity aligns with the Australian Government regional priority of Human Capital and Skills.

Springfield Jobs is an on-line jobs portal that allows you to search by location, employer or job type, 'Talent Communities' expands your search to event, membership, local community or a defined group.

Springfield Jobs is a user-friendly free portal for employers and job seekers to advertise and search local employment opportunities. Springfield Jobs covers the six suburbs of Great Springfield: Augustine Heights, Brookwater, Springfield, Springfield Central, Springfield Lakes and Spring Mountain.

This joint project commenced 1 August 2021.

## Activity 3 - Lockyer Valley Equine Collaborative

- RDA Ipswich & West Moreton has an anticipated level of involvement of: Contributor
- This activity aligns with the Australian Government regional priority of Human Capital and Skills

A Collaborative comprising the Lockyer Valley Turf Club, Lockyer Valley Regional Council, Racing Queensland, Equestrian Queensland, The University of Queensland School of Veterinary Science and Regional Development Australia (Ipswich and West Moreton) have been developing a plan to redevelop the Lockyer Valley Turf Club. The Collaborative have developed a Master Plan to create a multi-use racing and equine precinct with ability to host a variety of national and international world class equine events.

## Activity 4 - Local Jobs Wivenhoe

- RDA Ipswich & West Moreton has an anticipated level of involvement of: Support
- This activity aligns with the Australian Government regional priority of Human Capital and Skills
- The expected timeframe of the Local Jobs Program – Wivenhoe is in align with current funding contract

As part of supporting Australia's economic recovery from the COVID-19 pandemic, the Australian Government's Local Jobs Program (LJP) brings together expertise, resources and access to funding at the local level to accelerate reskilling, upskilling and employment pathways in the Wivenhoe Employment Region. Key employment and training priorities:

- Negotiate and co-design pre-employment preparation programs to address the current mismatch between the job requirements of employers / industries with vacancies they are unable to fill and the skillsets, experience and work behaviours of people on the Wivenhoe Employment Services Provider caseloads.

#### Activity 4 - Local Jobs Wivenhoe (Continued)

- Collaborate with all relevant levels of Government and private sector contractors to identify future major projects and ensure that associated social impact commitments are met through skills development in the current and future workforce. Mobilise the Employment Services Provider network and other stakeholders, including schools, to develop effective employment pathways.
- Collaborate with key regional stakeholders, including the three levels of Government, to address barriers to employment resulting from a lack of viable “transport to work” options within and across the Region. This will include strategies around driver’s licencing.
- Promote the engagement and retention of Australian Apprenticeships (including Traineeships) to align with projected skills shortages, including areas of future demand in the Region, and connect with appropriate sources of candidates including the Employment Services Providers.

#### Activity 5 - Ipswich Lockyer Valley Somerset Jobs ([iwmjobs.com.au](http://iwmjobs.com.au))

- RDA Ipswich & West Moreton has an anticipated level of involvement of: Leads the IWM Jobs portal.
- This activity aligns with the Australian Government regional priority of Human Capital and Skills

RDAIWM facilitated the development of an Ipswich Lockyer Valley and Somerset Jobs opportunities assessment and investment processes. This draws on information from local government authorities, government departments and educational institutions.

Ipswich Lockyer Valley and Somerset Jobs [Jobs.com.au](http://Jobs.com.au) is a free jobs portal for both employers and job seekers. During this period this platform also added an educational and training search function to link individuals with local educational institutions to match their field of study.

This joint project commenced 2016.

#### Activity 6 - Trade & Investment Queensland (TIQ) - West Moreton Trade and Investment Group

- RDA Ipswich & West Moreton has an anticipated level of support
- This activity aligns with the Australian Government regional priority of Regional employment and business

The expected timeframe of West Moreton Trade and Investment Group is to increase the level of export via business development. The ‘West Moreton Trade and Investment Group’ (WMTIG) has been established to provide an opportunity to develop initiatives to support greater trade and investment outcomes and collaboration across the West Moreton region. This will be achieved by: sharing information, identifying priorities, pooling resources, increasing government and stakeholder connectivity and collaboration and shaping trade and investment projects.

Trade & Investment Queensland (TIQ), and the Chief Executive Officer of Regional Development Australia Ipswich & West Moreton (RDAIWM) will co-chair this reference group. TIQ in collaboration with RDAIWM will provide secretariat support.



## PART II - FOR THE ANNUAL REPORT ON OUTCOMES

### What will we do?

RDA Ipswich & West Moreton facilitated and assisted with the creation and sustainability of regional jobs, education pathways and investment opportunities. Our undertaken jobs initiatives and Ipswich & West Moreton Jobs portal have seen significant use during this financial year and continue to expand and evolve in terms of job postings and recurring job seekers. We have met with key stakeholders surrounding employment issues and employability attributes, gathering insight and data on a regional level that is applicable to our region and its residents.

### Activity 1 - Springfield Regional Jobs Committee

The Springfield Regional Jobs Committee has seen frequent website utilisation of our recently prepared Anticipating Future Skills report, which demonstrates the key issues the region is facing for future employment pathways and targets preferred and needed skill sets for the upcoming labour force.

Our 'Educate to Employ' publication associated with the Springfield Regional Jobs Committee outlook provides a snapshot of the pathways from education to employment in the Greater Springfield Region.

Support of work experience placements for both localised secondary schools and TAFE Child Care students.

#### Springfield RJC/TAFE Presentation Evening

Attended by State Member for Jordan Charis Mullen, this successful evening was an opportunity for RDAWIM as a guest speaker to share information on 'skilling the community' to our many great local businesses. The event was attended by 30 local small business owners.

#### Highway to Success Day

Supporting local schools, Springfield RJC sourced and promoted the school industry connect day. SRJC were instrumental in sourcing key industry locals to act as mentors. Opportunity for SRJC to connect industry with 500 students from SCSHS.

#### Springfield Anglican College

RDAWIM was the guest speaker at their Grade 10 Further Focus on Employment and Training. Presented to over 80 students the jobs and careers that will be available in the next five years.



## Activity 2 - Springfield Jobs

### July 2021 - June 2022

- 942 Jobs Advertised
- 119 Active Employers
- 4,385 Active Jobseekers
- 51,842 Jobs Viewed
- 1,376 Jobs Applied

## Activity 3 - Lockyer Valley Equine Collaborative

The Lockyer Valley Equine Precinct Business Case and Feasibility Study was completed after extensive community consultation and design meetings.

RDAIWM supplied the economic modelling and events modelling for the feasibility study.

The Lockyer Valley Racing and Equine Collaborative, which is also made up of Racing Queensland, Equestrian Queensland, The University of Queensland's School of Veterinary Science and Regional Development Australia (Ipswich and West Moreton), has developed a master plan for a multi-use racing and equine precinct capable of host a variety of national and international events.

## Activity 4 - Local Jobs Program Wivenhoe

### Local Jobs Recovery Funding programs

- Kalfresh – 40 trainees
- Energy Skills QLD – Rail – 10 trainees
- Energy Skills QLD – Catering – 10 trainees
- Department of Education, Skills and Employment

### Ipswich Jobs Fair – 27 October 2021

- 2,654 job vacancies
- 78 apprenticeships
- 55 exhibitors
- 370 potential employees
- 140 job referrals to JB Foods Australia



## Activity 4 - Local Jobs Program Wivenhoe (Continued)

### Local Recovery Fund project updates and upcoming projects

- DGT and Kalfresh – 18 intakes
- Springmount Cleaning (Gold Coast and Wivenhoe)
- CSIA - Care Sector and Community Support – 30 placements
- Greenmountain - Worker's Transport
- Gatton Jail
- Aged Care – Start date August 2022
- Traffic Controllers – 48 placements
- Meals on Wheels
- ShapeCUT
- Weld Australia
- AIG
- JBS Meatworks – ESQ and Salvation Army

Approved Local Recovery Fund projects cover the food processing industry including abattoirs, home, aged and community care, traffic control, construction, cleaning, catering and rail. Two projects provide transport support for people to get to and from work. There are approved places for 223 people. These projects are in various stages of delivery.

## Activity 5 - Ipswich & West Moreton Jobs

### July 2021 - June 2022

- 6,454 Jobs Advertised
- 746 Active Employers
- 22,628 Active Jobseekers
- 58,232 Jobs Viewed
- 335 Jobs Applied

## Activity 6 - Trade & Investment Queensland (TIQ) - West Moreton Trade and Investment Group

RDAIWM on behalf of the West Moreton Trade and Investment Queensland Group made representation of the exporting opportunities in the region to:

- Queensland Trade Commissioner for China
- Queensland Trade Specialist for UAE

RDAIWM on behalf of the West Moreton Trade and Investment Queensland Group made representation of the medical services business opportunities in the region to:

- TIQ
- Queensland Department of Health
- Queensland Department of State Development
- West Moreton Hospital and Health Board
- Ipswich Hospital Foundation

Chaired the TIQ West Moreton Trade and Investment Group presentation by the TIQ international Trade Commissioners from:

- South Asia, Hong Kong, Korea and ASEAN

Chaired the TIQ West Moreton Trade and Investment Group - TIQ has partnered with KPMG to develop the 2032 Olympic and Paralympic Trade and Investment Strategy (2032 Strategy), which will articulate the scope and initiatives TIQ and the Queensland Government will deliver to achieve potentially a \$4.6 billion uplift in gross state product (GSP). To inform the 2032 Strategy, KPMG is undertaking an extensive program of consultations to seek views from a range of key stakeholders across the state.





## OUTCOME 2

Promote greater regional awareness of and engagement with Australian Government policies, grant programs and research

### PERFORMANCE INDICATORS

- Provide details of where you have supported awareness raising and or engagement
- Number of submissions supported

## PART I - FOR THE ANNUAL BUSINESS PLAN

### What will we do?

#### Activity One Funding and Regional Update Newsletters

- Our newsletter is distributed via e-mail database and linked to our social media platform to promote government and regional programs. The newsletter reaches regional stakeholders, federal members and all levels of government.
- To develop a new funding and grant calendar function on the RDAIWM website.

#### Activity Two Grant Funding Assistance

- To develop funding proposals with local councils and community organisations
- Regional events and presentations on funding opportunities
- To organise and conduct regional events and presentations to local councils and community organisations to highlight and inform government programs and initiatives

#### Activity Three Social Media

- Increase the views on Facebook, LinkedIn, RDAIWM website
- Inform business and the community on government policies and programs
- Provide relevant information on community development needs
- Promote and disseminate information about Government priorities and programs
- Develop, Implement, monitor and adjust the RDAIWM engagement/communication framework

## PART II - FOR THE ANNUAL REPORT ON OUTCOMES

### What will we do?

Provide a description of the activities during the reporting period, and how these activities contributed to your RDA's addressing of outcome 2. In dot point form, outline the nature of the support you provided to stakeholders, including the number of stakeholders supported through activities including (but not limited to) submissions drafted / actively supported, advice provided about submissions, guidance provided about submissions / application processes / other, webinars and or seminars hosted, workshops and or meetings held, and social media and website updates posted.

### Activity One Funding and Regional Update Newsletters

#### Funding Newsletters

July 2021 – June 2022

- 14 newsletters – 46,204 emails

#### Regional Update eNewsletters

July 2021 – June 2022

- 16 newsletters – 70,293 emails

### Activity Two Grant Funding Assistance

#### Letters of support provided

- 22 funding applications

#### Grant training

- 24 local not-for-profits

#### Economic modelling, regional data and statistics and funding assistance supplied to:

- 19 Regionals Councils, community organisations and businesses

### Funding Announcements

#### Building Better Regions Round 5 - Infrastructure

- Lockyer Valley Regional Council – The Great Divide Mountain Bike  
\$3,333,000 – Total \$ 6,666,000
- Beaudesert and District Tennis – Upgrade/Restore  
\$97,483 – Total \$ 194,966
- Somerset Regional Council – Lowood-Minden Road  
\$687,950 – Total \$ 1,375,900
- Destination Scenic Rim – Tourism Research  
Total \$ 20,000

#### Building Our Regions Round 5

- Scenic Rim Regional Council – Beaudesert Town Centre  
\$3,750,000 – Total \$ 8,400,4000
- Scenic Rim Regional Council – Tamborine Mountain Gallery Walk  
\$150,100 – Total \$ 225,200

#### National Recovery and Resilience Funding

- The Boonah Show Society - Multi-Purpose Arena  
\$3,850.000



# PART II - FOR THE ANNUAL REPORT ON OUTCOMES

## Activity Three - Social Media

- RDAIWM - Facebook  
155 posts - 410,757 reaches
- IWMJobs – Facebook  
72 posts – 3,177 reaches
- RDAIWM Website  
19,245 views
- Ipswich Lockyer Valley and Somerset Jobs Website  
79,021 views
- Springfield Regional Jobs Committee – Facebook  
208 posts - 703,436 reaches
- CEO – Linked In  
119 posts - 46,910 views
- Springfield RJC Website  
6,859 views
- Springfield Jobs Website  
106,813 views

**Ipswich, Lockyer Valley & Somerset Jobs**

Search Jobs ▼ Advanced **Search Training**

Title, industry or company  Suburb or postcode  **GO**

**LATEST JOBS** ▶ See All

15 SEPTEMBER	Casual Retail Sales Assistant   Yamanto   ... Yamanto, QLD
15 SEPTEMBER	Labourer Raceview, QLD
15 SEPTEMBER	Quarry Operator Helidon, QLD
15 SEPTEMBER	Trade Repair Officer Amberley, QLD
15 SEPTEMBER	Cleaner Redbank Redbank, QLD

**Jobs for locals**

This is a simple free portal for Ipswich, Lockyer Valley and Somerset employers and job seekers to advertise and find local employment and educational opportunities.  
Join our community and register now.

facebook.com/iwmjobs

## OUTCOME 3

Contribute to Commonwealth region policy making by providing intelligence and evidence-based advice to the Australian Government on regional development issues.

### PERFORMANCE INDICATORS

- Outline instances where you have provided intelligence and evidence-based advice to the Australian Government
- Number of instances information / feedback was provided.

## PART I - FOR THE ANNUAL BUSINESS PLAN

### What will we do?

#### RDA Ipswich & West Moreton Strategic Plan 2021 - 2025

The Regional Development Australia Ipswich & West Moreton's (RDAIWM) 'Strategic Plan 2021-2025' is a critical document designed to reflect the aspirations and the context of the communities it serves. According to The Australian Government's six regional priorities, the Ipswich & West regional projects, programs, and policies will be summarised under one of the following:

1. Connectivity and infrastructure incorporating digital connectivity, transport links, and freight and supply chain infrastructure
2. Human capital and skills to provide skilled and adaptable workforces, regional universities and training and schooling
3. Regional employment and business to develop regional businesses and industry, local R&D and innovation and a strategic regional vision
4. Leadership and collaboration by investing in regional leadership, capable local Government and the Indigenous community
5. Amenity and liveability providing services, facilities and liveability, and support for local priorities
6. Sustainable natural resources to build future resilience, ensure sustainable foundations and provide economic opportunities and jobs.

#### This is Our Region

A strategy that partners with local Chambers of Commerce, universities, federal and state departments and agencies as well as local governments, to promote and raise awareness of the combined area of Ipswich & West Moreton for development and investment opportunities and prospects.

#### RDAIWM Project Status Report

The RDAIWM Project Status Report is a six-monthly report that contains the latest information about the region available from NIEIR, Queensland Statistician's Office, Australian Bureau of Statistics, Core Logic and the local councils. This is used as a reference document to assist investors to better understand the region as a whole.



## PART II - FOR THE ANNUAL REPORT ON OUTCOMES

### What will we do?

Provide a description of the activities during the reporting period, and how these activities contributed to your RDA's addressing of outcome 3. In dot point form, outline the nature of the support you provided, including (but not limited to) the number of contributions made to Regional Intelligence Briefings teleconferences, briefings provided to relevant Ministers and Government, meetings held with or attended by Members of Parliament to discuss regional matters, submissions made to Parliamentary enquiries, participation in departmental surveys and submissions, additional contributions of local information provided, and other support provided to Government.

### RDAIWM Strategic Plan 2021-2025

The RDAIWM Strategic Plan 2021-2025 aims to reinforce the equally critical role of the three tiers of Government, delivering leadership, empowerment, and strengthening institutions in the essence of sustainable regional development and liveability.

Liveability is the 'key' to sustainability and why people, families and friends decide on an area to reside. Liveability conceptualises employment and raising a family in a region with vital essential facilities such as day-care, schools, sporting venues, libraries, aged care facilities, parks, hospitals, roads and transport. Liveability enables life balance and completes the desire to work and enjoy life in a particular community.

### Methodology

To ensure a comprehensive set of inputs, this plan was informed through a multi-stage methodology. The constituent parts were:

1. A literature review of all existing plans and strategies at Federal, State and Local Government levels. These were:
  - a. All Australian Government Departments Corporate Plan 2021-2022
  - b. All Queensland State Government Departments Corporate Plan 2021-2022
  - c. Infrastructure Australia
  - d. Ipswich City and Lockyer Valley, Scenic Rim and Somerset Regional Councils Corporate Plans
2. An online survey over a six-week period conducted with the SurveyMonkey tool. The survey had 6 areas of focus, aligning with The Six Pillar priorities. Respondents were asked which local government area they best aligned with. Within each section, respondents were asked three questions relating to each priority. Respondents were targeted by (email database/social media) In total, over 400 individuals and organisations responded to the survey.
3. National Institute of Economic and Industry Research completed an Ipswich West Moreton Update Report to be used as an addendum.

## PART II - FOR THE ANNUAL REPORT ON OUTCOMES (CONTINUED)

### This is Our Region

This is Our Region is a RDAIWM strategy that partners with local Chambers of Commerce, universities, federal and state departments and agencies as well as local governments, to promote and raise awareness of the combined area of Ipswich & West Moreton for development and investment opportunities and prospects. This information is then relayed to the Federal Ministers and local Federal Members, as well as the Queensland State Government counterparts.

- Community consultation – over 200 meetings with local councils, community groups and businesses relating to the economic development of our region
- Inland Rail
  - Meeting with Queensland State Community Engagement team on the four sections of the Inland Rail in the RDAIWM region
    - Gowrie to Helidon
    - Helidon to Calvert
    - Calvert to Kagaru
    - Kagaru to Acacia Ridge
- Ipswich City economic Recovery Taskforce
  - The effects of a disaster on the economic environment can be classified in terms of direct and indirect impacts. The tangible impacts can usually be given a monetary value and may include loss of tourism, employment opportunities and reduction in cash flow for businesses.
  - The role of the Economic Recovery Taskforce (the Taskforce) is to develop the City's capability to recover from these impacts and coordinate the effective economic recovery from disaster events in Ipswich.

### RDAIWM Project Status Reports January 2021 – December 2021

The RDAIWM Project Status Report January 2021 – December 2021 was released 29 April 2022. This newly constructed Project Status Report relates to scheduled projects and activities being planned for delivery this financial year. Also highlighted are the key developments occurring in the Local Government Areas of Ipswich, Lockyer Valley, Scenic Rim and Somerset regions.

- 2,543 website views
- 100 printed copies distributed to stakeholders
- 40 electronic copies downloaded
- Used by Ipswich City Council as part of their business attraction

## Communications and Marketing Strategy

The Regional Engagement/Communication Framework's primary aim is to provide guidance to Committee Members and the Chief Executive Officer on inclusivity and 'when' and 'how' the organisation should engage with the regions (Ipswich & West Moreton) communities, associated stakeholders and clients.

In an effort not to duplicate the RDAIWM Regional Communication/Engagement Framework will acknowledge existing engagement frameworks that demonstrate RDAIWM inclusivity principles. The cases where deficits are identified, RDAIWM will work closely with stakeholder alignments to maintain continuity of best practice benchmarks.

The RDAIWM Regional Engagement/Communication Framework objectives for establishing and maintaining a world's best practice level of regional communication and engagement include:

- Establish a credible Engagement/Communication strategy based on inclusivity and continuity;
- Information – provide web site content that is relevant to the region, with easily accessed, exact information on RDAIWM including current data that enables and enhances participation in sustainable regional development programs and initiatives;
- Advocate on behalf of local government frameworks to increase the level of stakeholder participation; and
- Encourage and support flexible methods of the involvement to 'all' stakeholders and clients.

Establish a credible Communication & Engagement strategy based on inclusivity and continuity – To establish and maintain a reasonable, inclusive and consistent communication and engagement strategy. The RDAIWM Committee will work in collaboration and cooperation with all governments and existing local government frameworks.

The three (3) tier level of collective intelligence will provide the necessary level of assurance by the RDAIWM Committee to progress any subsequent recommendations.

Information – provide website content that is relevant to the region, with easily accessed, clear (reader-friendly) information on RDAIWM. This will include current data that enables and enhances participation in sustainable regional development programs and initiatives – The RDAIWM web site is designed with specific consideration to the various levels of Information and Communication Technology (ICT) capability across the region. The primary aim of the RDAIWM web site will be to provide communities across the region with current information.

### **Regional Development Australia Ipswich & West Moreton will:**

- Inform the Government of the impact of policies and programs on business and the community;
- Provide constructive and regular feedback to Government on community development needs;
- Promote and disseminate information about Government priorities and programs;
- Provide a referral service to link their community with these initiatives; and
- Develop, Implement, Monitor and adjust the RDAIWM Engagement/Communication Framework



# Communications and Marketing Strategy (Continued)

## Media

- When dealing with the media, the RDAIWM will act to maintain the excellent reputation of the Australian Government.
- The Chair is the only spokesperson for the RDAIWM unless the Chair on a specific project delegates others.

## Organisational Image/Profile

- All promotional material and publications produced by the RDAIWM will acknowledge the financial and other support it receives from the Australian Government in the appropriate format, as stated in the operational contract.

## Procedures

- All communications with the media must be cleared through the Departmental Liaison Officer before releasing to the media. RDAIWM shall obtain agreement of the Liaison Officer before any launches or openings, or the release of any publicity materials. The RDAIWM will also emphasise the Australian Government's contribution to any project or initiative when promoting RDAIWM activities or projects.

The RDAIWM Marketing Strategy is a combination of communication and engagement mediums aimed at articulating the committee's priorities and focus for the 2022-2023 period.

## Relevant marketing considerations include:

- Development and management of RDAIWM official website
- Development and management of Springfield Regional Jobs Committee website
- Development and management of the IWMJobs.com website
- Development and management of the springfieldjobs.com.au website
- Procedures to ensure timely updates to the website
- Planned and anticipated media opportunities – radio, internet and print
- The development and dissemination of promotion material
- The development and distribution of regional fact sheets
- Monthly Newsletters – General Operation
- Monthly Newsletters – Funding Opportunities
- Weekly RDAIWM reports to committee members, including:
  - Federal and State media statements
  - Funding reports for Ipswich & West Moreton
  - Relevant media releases

## Goals and Expectations

Item	Description
RDAIWM Social Media	Increase Facebook reaches to 500,000 Increase LinkedIn reach to 50,000
RDAIWM website	Complete overhaul of existing website and its original assets. New home page, as well as secondary pages. New funding and grants archive that is easier to navigate.
IWMJobs	General updates and maintenance Education & Training Courses segment of website added. Inclusions for more job board usability.
Springfield Regional Jobs Social Media	Increase Facebook reaches to 1 million
Springfield Regional Jobs Committee website	Update and maintain.
Springfield Jobs website	General updates and maintenance Education & Training Courses segment of website added. Inclusions for more job board usability.
Electronic database	Ongoing maintenance and updating of contact details in the electronic database for newsletter mail-outs – 4,500 contacts
Fortnightly RDAIWM newsletters and funding announcements	RDAIWM newsletters and funding newsletters developed and distributed to contacts in the electronic database
RDA National Newsletter	Periodic RDAIWM articles in the national newsletter
Regional field trips	Community and Council visits throughout Ipswich & West Moreton
Promote via established regional communication channels	Regular media releases via mainstream and social media

# Ipswich Region

The Ipswich region has sought after several rounds of funding and secured some great successes. However, unfortunately with those successes there are still several Australian Government funding programs, including the Building Better Regions Fund, which excludes most of the Ipswich Local Government Area due to the eligibility being based on the boundaries of the Greater Brisbane which Ipswich is currently a part of.

## Funding Assistance

### Ipswich City Flood Recovery Taskforce

- Gathering and supply of local information
- Grants and funding assistance

### Ipswich Orchestral Society

- Business and strategic planning
- Queensland Music Grant

### The Top Office

- Supplied construction data for the region (January - December 2021)

### Ipswich City Council

- Supplied monthly project construction data
- Supplied commercial building vacancy numbers

### Ipswich Hospital Foundation

- Supplied specific regional data and statistics

### Sporting Shooters Association of Australia (Queensland)

- Grant and funding opportunity for planning toward 2032 Brisbane Olympic and Paralympic Games

### Greater Springfield Chamber of Commerce

- Sole Traders & Small Business COVID-19 Grants, information and data
- Cyber security - free training information

### Aussie Painters Network

- Advertised available apprenticeships programs

### Planet Ark

- Energy charging stations and super microgrids project scope

### Local Jobs Taskforce (Wivenhoe)

- Supplied employment industry vacancy numbers
- Supplied regional employment vacancy numbers

### Keidges Farm Equipment

- Australian and State Government COVID-19 business grants in conjunction with Queensland State Government Department of State Development



# Lockyer Valley Region

The Lockyer Valley region has made an admirable effort at managing to secure Federal Government funding throughout this fiscal year, alongside the efforts of letters of support for prospective development projects and overall assistance in other funding ventures.

## Letters of Support

Lockyer Valley Regional Council

- Black Summer Bushfire Grants  
(Modernisation of Infrastructure to Improve Emergency Response)
- Black Summer Bushfire Grants  
(Enhancement of Infrastructure to Improve Emergency Response)

## Funding Announcements

Building Better Regions (Round 5 - Infrastructure)

- Lockyer Valley Regional Council  
The Great Divide Mountain Bike Route  
\$3,333,000 of a total \$6,666,000

## Funding Assistance

Lindsay Ziser Vegetables

- Assistance with small business development grant
- Assistance with water grant

Lutheran Services Aged Care

- Assistance with grant for Queensland's Seniors Month

Lockyer Valley Equine Precinct

- Construction Stage - Full Economic Modelling
- Construction Stage 1a & 1b - Economic Modelling
- Events - Financial Modelling

Laidley Community Centre

- Assistance with business planning

# Scenic Rim Region

Supporting local development projects is the foundation of securing funding for the Scenic Rim region, and with the support of many community members, stakeholders and investment leaders, numerous projects have had vocal and written support to aide in the successful outcomes of several funding applications in the Scenic Rim region.

## Letters of Support

### Scenic Rim Regional Council

- Building Better Regions Fund (Round 6) - Canungra Visitor Information Centre
- Building Better Regions Fund (Round 6) - Beaudesert Community HUB
- Building Better Regions Fund (Round 6) - The Long Sunset
- Building Better Regions Fund (Round 6) - Escape in the Scenic Rim
- Local Government Grants - Culverts at Warrill Creek
- Local Government Grants - Lupton Road Sports Precinct
- Local Government Grants - Assessment Management Tool
- Local Government Grants - Public Amenities Tamborine Mountain

## Funding Announcements

### Building Better Regions (Round 5 - Infrastructure)

- Beaudesert and District Tennis - Upgrade/Restore (\$97,483 - Total \$194,966)
- Destination Scenic Rim - Tourism Research (\$20,000)

## Funding Assistance

### Scenic Rim Regional Council

- Grant and funding training for 24 local not-for-profit organisations
- Economic modelling training

### Kooralbyn to Boonah Road Action Group

- Supplied information and data

### 4 Aussie Heroes

- Building Better Regions Fund (Round 6) - Camp Courage Retreat

### Kalfresh

- Modern Manufacturing Initiative - Carrots 2.0 (Investing in Future Food)

### Building Our Regions (Round 5)

- Scenic Rim Regional Council - Beaudesert Centre
- Scenic Rim Regional Council - Tamborine Mountain Gallery Walk

### Boonah Showgrounds

- Economic modelling
- Events - Financial modelling
- Black Summer Bushfire Recovery Grant

### Beaudesert Meals on Wheels

- Assistance with funding

# Somerset Region

Somerset region has shown a significant reception to funding of regional projects in recent times, with Somerset Regional Council being successful in numerous funding applications and having had several letters of support provided to aide in the development and maintenance of existing regional facilities and construction of new projects.

## Letters of Support

### Somerset Regional Council

- Black Summer Bushfire Grants - Bushfire Resilience Project Proposed
- Black Summer Bushfire Grants - Brisbane-Somerset Boundary Firewall Project
- Building Better Regions Fund (Round 6) - Brisbane Valley Rail Trail
- Building Better Regions Fund (Round 6) - Murrumah Road
- Building Better Regions Fund (Round 6) - Toogoolawah Gateway
- Preparing Australian Communities - Lowood, Toogoolawah

## Funding Announcements

### Building Better Regions (Round 5 - Infrastructure)

- Somerset Regional Council - Lowood-Minden Road (\$687,950 - Total \$1,375,900)
- Black Summer Bushfire Recovery Grant Program (\$500,000 - Total \$800,000)
- Queensland's Fishing Infrastructure Grants Program (\$63,000 - Total \$70,169)
- Australian Government's Preparing Australian Communities Program (\$3,546,238 - Total \$3,546,238)
- Queensland Risk Reduction Resilience Fund - Murrumba Road near Esk (\$563,206 - Total \$1,126,412)
- Heavy Vehicle Safety and Production Program - Kisslings Road (\$1,147,363 - Total \$1,147,363)

## Funding Assistance

### Toogoolawah Showgrounds

- Assistance with funding
- Economic modelling
- Events modelling





**Regional Development Australia  
Ipswich & West Moreton Region Inc.**

[rdaiwm.org.au](http://rdaiwm.org.au)  
[executive@rdaiwm.org.au](mailto:executive@rdaiwm.org.au)  
0429 159 308